

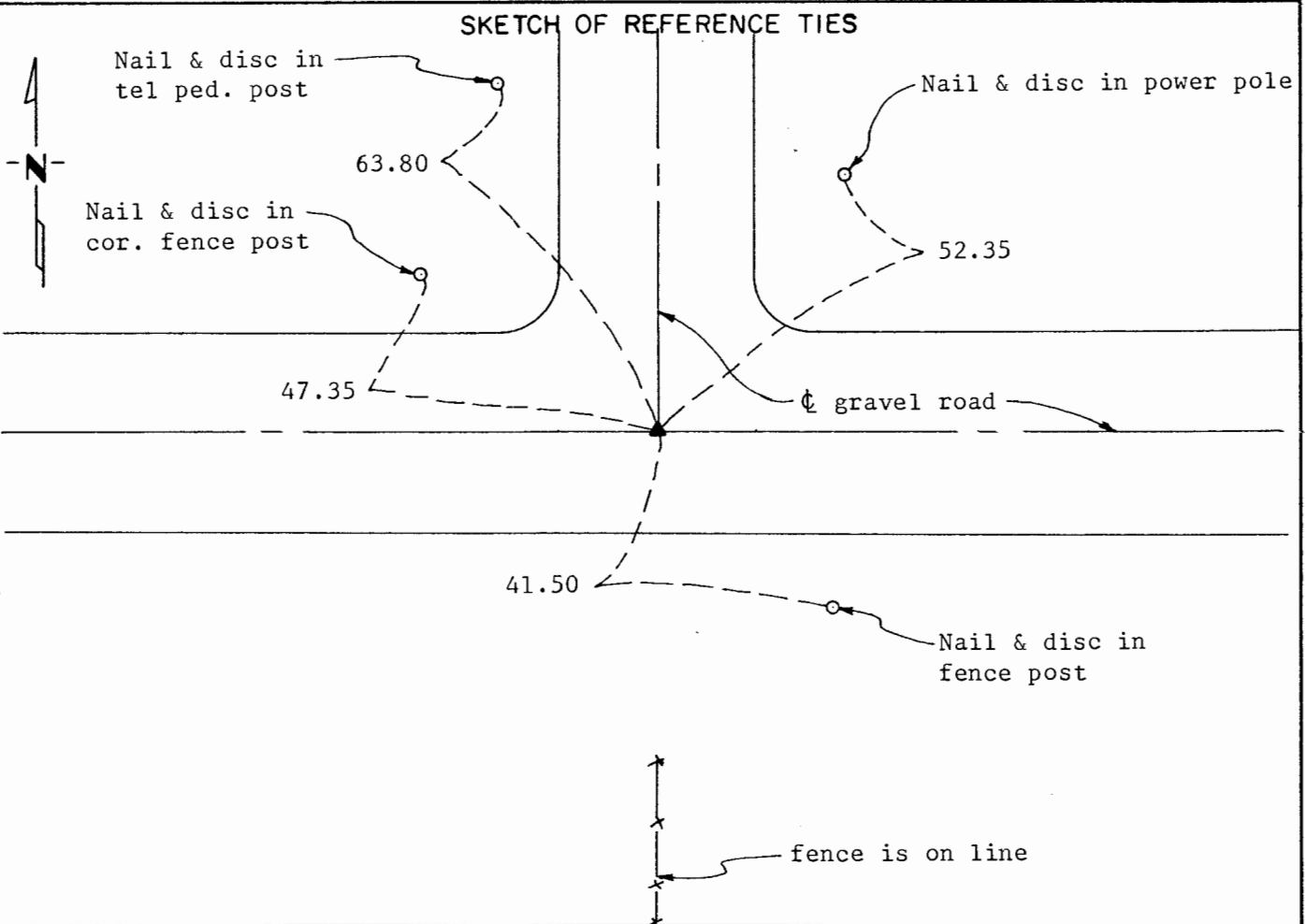
CERTIFICATE OF LOCATION OF GOVERNMENT CORNER

Southeast Corner of Section 10, Township 108 N., Range 42 W., 5th P.M.

STATE OF MINNESOTA, County of Murray

At the corner location shown on the sketch:

- On 12-12-87 found a 12"x8" stone set in a broken crockery pot (25" deep).
DATE
- left monument as found, lowered monument, removed monument (explain)
- On 12-12-87 placed a 3/4" O.D. x 24" iron pipe on E. side of stone (25" deep)
DATE & set 3/4" O.D. x 24" iron mon. marked with Reg. No. 13593 over stone (4" deep).



Statement of evidence relative to this corner location is on back of page.

I hereby certify that this document and the data contained herein was prepared by me or under my direct supervision.

John Madson 2-1-88
SIGNATURE DATE

Registration No. 13593

Land Surveyor, Professional Engineer
 County Surveyor, County Engineer

OFFICE OF THE COUNTY RECORDER
County of Murray

I hereby certify that this document was filed in the Co. Recorders office at 10 A.M. on the 2nd day of February A.D., 19 88

County Recorder Jama V. Johnson
By _____, Deputy

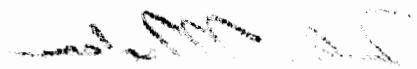
DOCUMENT NO. _____

Statement of Evidence: S.E. Cor. Sec. 10-108-42, Murray County

The corner was originally established during the Public Land Survey of Skandia Township during the 1860's.

There were no records from the Murray County Highway Department pertaining to this corner.

On December 12, 1987, I found a 12"x8" stone set in a broken crockery pot (25" deep). I set a 3/4" O.D. x 24" iron pipe on the east side of the stone (25" deep) and set a 3/4" O.D. x 20" iron monument marked with Reg. No. 13593 over the stone (4" deep).

A handwritten signature in dark ink, appearing to be "M. J. ...", located in the lower right quadrant of the page.